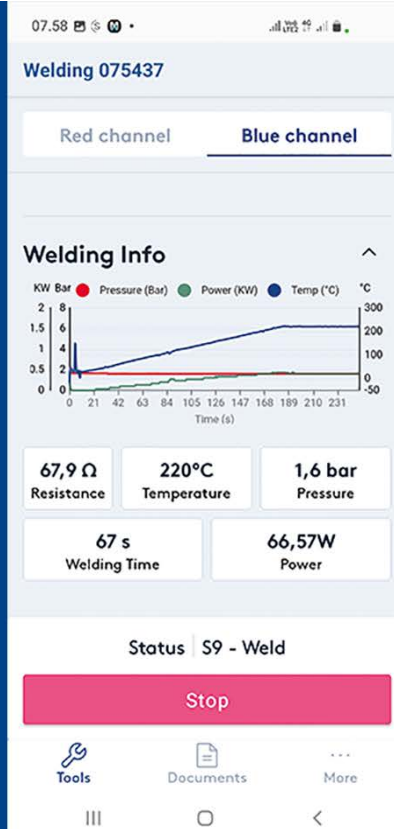


# Controlled welding process is the key to long and flawless lifetime of the pre-insulated pipe system.

Product info no.2-2022



## UPDATE REGARDING LOGSTOR PRODUCT PROGRAM

Once again, we have exciting news from LOGSTOR.

Below, please find our Product info No. 2-2022 with following updates:

- LOGSTOR Connect WeldMaster Tool that controls the communication between the smartphone (IOS – Android) and WeldMaster/WeldMaster Light
- New flexible pressure tool for EWJoint ø90 – 200 mm
- TwinPipe 114x114/355 and 114x114/400 as conti pipe with diffusion barrier

Should you have any questions, please contact your usual LOGSTOR contact person or the undersigned.

Best regards  
Kingspan LOGSTOR

**Peter Jorsal**  
Product & Academy Manager

# LOGSTOR Connect WeldMaster Tool to control the communication between the smartphone (IOS – Android) and the welding machine

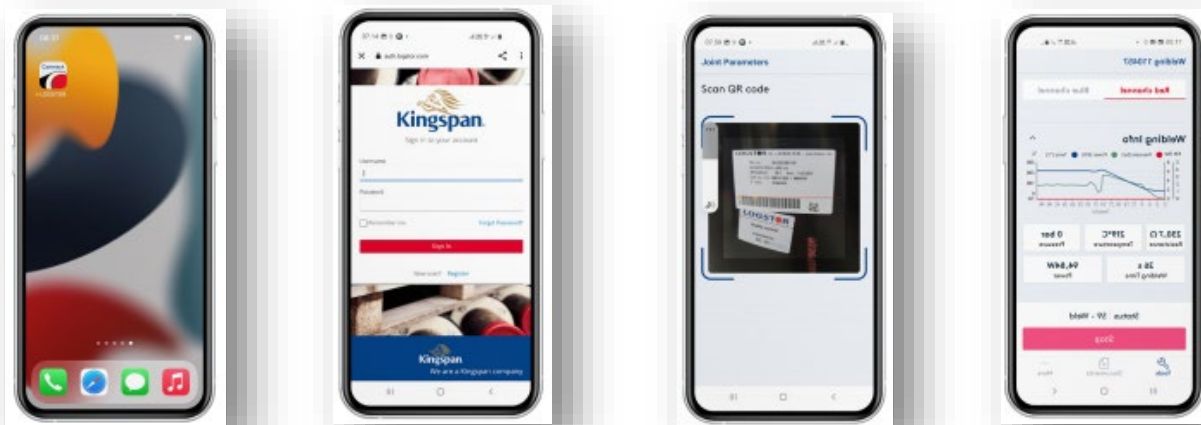
We are pleased to introduce the LOGSTOR Connect app and the first WeldMaster Tool. This will be the first of many LOGSTOR solutions available on your mobile device.

The LOGSTOR Connect WeldMaster tool controls the communication between the smartphone and the welding machine and replaces the existing PDA solution. The existing PDA solutions run on 2G/3G networks and will be phased out shortly.

All features, scan options and remote support as you know today are available in the app.

The LOGSTOR Connect WeldMaster tool provides a user-friendly and intuitive welding flow with options for improved documentation with new Photo Documentation feature for different phases of the installation.

With LOGSTOR Connect, our WeldMaster solution is ready for the future and together with the WeldMaster portal offers a unique solution for both Utilities and Contractors to oversee ongoing projects with detailed documentation.



## Key features and customer value

- Photo documentation for the weld joint installation during the different installation phases: preparation, process, and completion
- Prevent unnecessary welding-stops through easy access via smartphone (IOS – Android)
- Easy and direct access to product information and user manuals
- Network access to 4G and 5G

Controlling the welding process is key to the long and flawless lifetime of the pre-insulated pipe system. LOGSTOR Connect WeldMaster Tool offers easy installation for the joint fitter and provides the required documentation for the Energy company.

## **LOGSTOR Connect WeldMaster onboarding guide**

To access the onboarding guide please refer to [LOGSTOR Connect - WeldMaster Onboarding Guide](#).

If you want to learn more about the full WeldMaster solution and onboarding, please refer to [LOGSTOR WeldMaster 5.0](#).

## **Terms of Use and Privacy Notice only for LOGSTOR Connect**

Please refer to <https://www.logstor.com/service-support/tools/logstor-connect> to find Terms of Use and Privacy Notice.

## **Installation instructions for the WeldMaster tool in LOGSTOR Connect**

Please refer to <https://www.logstor.com/media/7523/kingspan-logstor-connect-weldmaster-user-installation-guide-da-eur.pdf> to find the installation instruction

## **Implementation**

To prepare the WeldMaster to be able to communicate with LOGSTOR Connect a "Gateway" must be installed in the WeldMaster. This will be done by our Service Department in Denmark. WeldMasters shall therefore be send to our Service Department in Denmark to have the "Gateway" installed. Please contact Tim Stoltenberg Jensen for details - [tim.jensen@kingspan.com](mailto:tim.jensen@kingspan.com).

## **Courses in our Academy**

During the coming period, we will start to include installation of weld joints with LOGSTOR Connect in our training sessions.

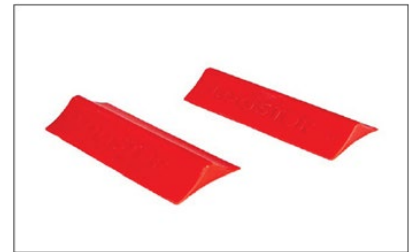
## **Pricing 2022**

For prices, please contact our Service Department in Denmark, Tim Stoltenberg Jensen, [tim.jensen@kingspan.com](mailto:tim.jensen@kingspan.com)

## New flexible pressure tool for EWJoint $\varnothing 90 - 200$ mm

We are now ready to introduce the flexible pressure tool to be used on EWJoint dimension  $\varnothing 90 - 200$  mm.

The principle of the tool is basically the same as for bigger dimensions, but the handle is different. Please see the pictures below.



### The features and value proposition of the new flexible tools are the following

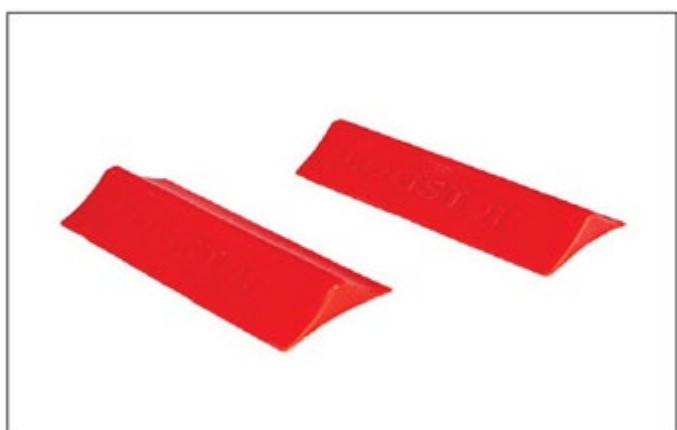
- Lower investment in pressure tools
  - One flexible pressure tool for all dimensions  $\varnothing 90 - 200$  mm
  - The same tool can be used for all dimensions
- Faster installation time
  - Faster installation time due to less tools to handle for different diameters
- Optimal working environment for the casing joint fitter
  - Low weight of each part of the flexible pressure tool
- High focus on safety
  - Safety valves on the pressure bands will ensure high safety for the joint installer during installation
- High quality welding
  - The correct pressure (1,5 bar) during the welding process is secured with air pressure which automatically is controlled by the WeldMaster/WeldMaster Light

Pressure tools for EWJoint  $\varnothing 225 - 800$  mm and  $\varnothing 900 - 1400$  mm are unchanged.

### Details about the new flexible pressure tool

Flexible pressure tool EWJoint,  $\varnothing 90 - 200$  mm, complete set, Material number 9050000000028



**AirLock for flexible pressure tool  $\varnothing 90 - 200$  mm, material number 9050000000027****Wedge for EWJoint  $\varnothing 90 - 200$  mm, material number 9050000000023****Pressure band for flexible pressure tool  $\varnothing 90-200$  mm, material number 9050000000011****Pressure on the pressure bands/welding time**

The pressure on the pressure bands for EWJoints in dimension  $\varnothing 90 - 200$  mm is 1,5 bar. It must be controlled that the pressure on the mobile phone via LOGSTOR Connect or on the PDA is 1,5 bar. WeldMaster/WeldMaster Light will survey that the pressure is kept within the allowed tolerances during the welding process.

Update of the PDA's being able to install EWJoints with the new pressure tool is managed centrally from our Service Department and will take place automatically.

When the joint installer starts the PDA or LOGSTOR Connect, he will receive a notice about the possibility of being able to install EWJoints in dimension  $\varnothing 90 - 200$  mm with the new pressure tool.

Due to the continuous and controlled welding pressure of 1.5 bar with the new pressure tool, the welding time is reduced compared to the previous mechanical pressure tool for EWjoint.

We have of course performed a comprehensive test program to document that we fulfil the requirements in THE European Standard for casing joints, EN489-1.

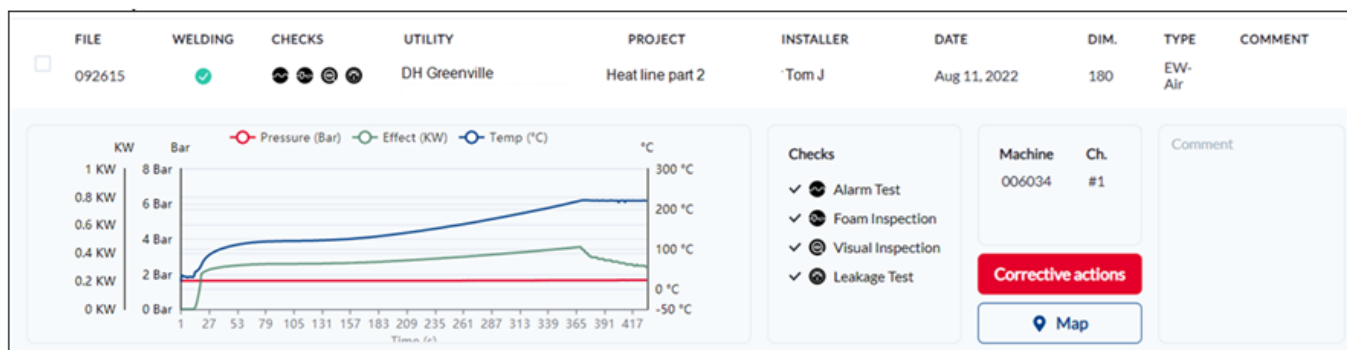
### Installation instruction

The installation instruction is on our home page under "Catalogues and documentation" on the following link <https://www.logstor.com/media/7490/kingsp-2.pdf>

When scanning the bar code on the weld strips or if data for the EWJoint is entered manually the installer will automatically on the PDA or on the smartphone via LOGSTOR Connect have the question about which pressure tool is used for the installation.

### Documentation on the WeldMaster portal

Documentation on the WeldMaster portal for the specific welding of an EWJoint size  $\varnothing 180$  mm with air pressure and the new flexible pressure tool will be as shown below:



### Training of joint installers

We will include the new tool in our standard courses at LOGSTOR Academy.

It will not be required that joint installers will have a recertification, when they start to use the new flexible pressure tool, but joint installers with a valid certificate shall have a demonstration of the new tool before they start to use it.

Certified installers shall therefore individually contact LOGSTOR Academy for this demonstration.

On our home page we have a video of the installation. Please use the link <https://www.logstor.com/service-support/kingspan-academy/installation-movies>

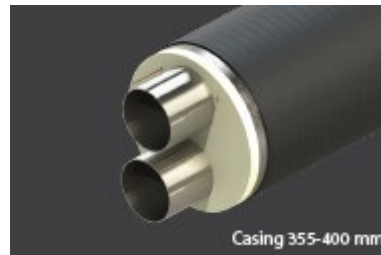
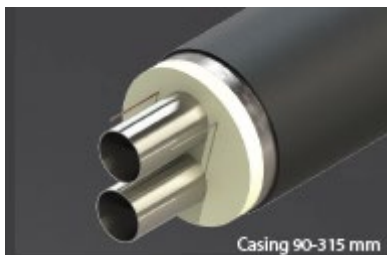
### Ordering of the new flexible pressure tool for EWJoint $\varnothing 90 - 200$ mm

Please make contact to our Service Department in Denmark, Tim Stoltenberg Jensen, [tim.jensen@kingspan.com](mailto:tim.jensen@kingspan.com).

## TwinPipe 114x114/355 and 114x114/400 as conti pipe with aluminium diffusion barrier

We are now ready to launch TwinPipe 114x114/355 and 114x114/400 produced as conti pipe with an aluminium diffusion barrier that will ensure, that the good heat loss properties will remain unchanged over lifetime.

Now we have a complete program with TwinPipes in dimension's 26,9 – 114,3 in all insulation series as conti pipes with diffusion barrier.



### Value Proposition for the customer

The value for our customers will be lower heat loss cost over lifetime and less CO<sub>2</sub> emission. Please see below example where heat loss cost saving, and less CO<sub>2</sub> emission is calculated when comparing 114x114/400 traditional produced TwinPipe and conti produced TwinPipe with diffusion barrier:

- Flow temperature 80 °C
- Return temperature 40 °C
- Cost of energy 60 Euro/Mwh
- Period for calculation 30 years
- 1000 m TwinPipe 114x114/400
- Heat loss cost saving is 14.365 Euro
- CO<sub>2</sub> emission saving is 1710 ton (Based on natural gas)

### External tests

The new dimensions TwinPipe with diffusions barrier is of course tested according to all requirements in the European Standards with a positive result.

### TCO tool and Calculator

Our TCO Tool and Calculator are updated with the new 114x114/355 and 114x114/400 as conti pipe with diffusion barrier.

### Brochure

Please see the brochure on the following link on our home page

<https://www.logstor.com/media/7453/kingspan-logstor-twin-pipe-leaflet-dk-072002.pdf>

### Delivery concept

From 2023 we will include 114x114/355 and 114x114/400 as conti pipe with diffusion barrier in our delivery concept. Until then please contact our sales and Customer Service with requests on specific projects.